

# TYNDELL

FOUR BEDROOM INTERIOR TOWNHOME



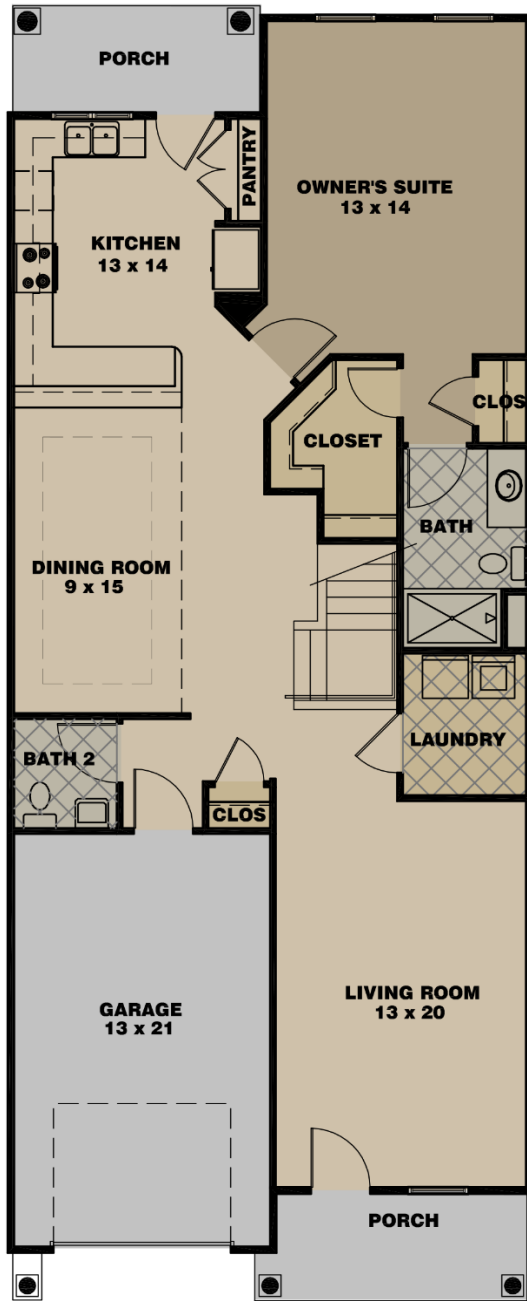
- OPEN FLOOR PLAN FOR ENTERTAINING
- 2304 SF
- 4 BEDROOMS
- 2.5 BATHS
- GOURMET KITCHEN WITH BREAKFAST BAR & LARGE PANTRY
- DOWNSTAIRS OWNER'S SUITE WITH WALK-IN CLOSET
- COVERED FRONT & REAR PORCH
- ATTACHED GARAGE

*Fiddler's  
Crossing*

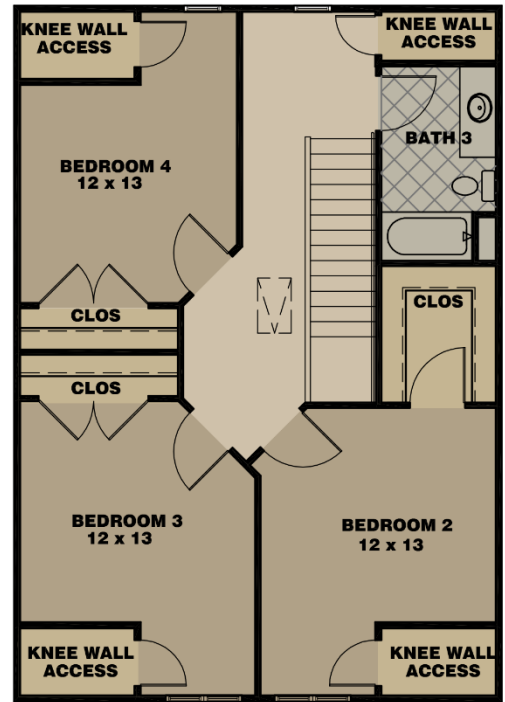


# TYNDELL

## FOUR BEDROOM INTERIOR TOWNHOME



First Floor



Second Floor

