

TYNDELL

THREE BEDROOM INTERIOR TOWNHOME



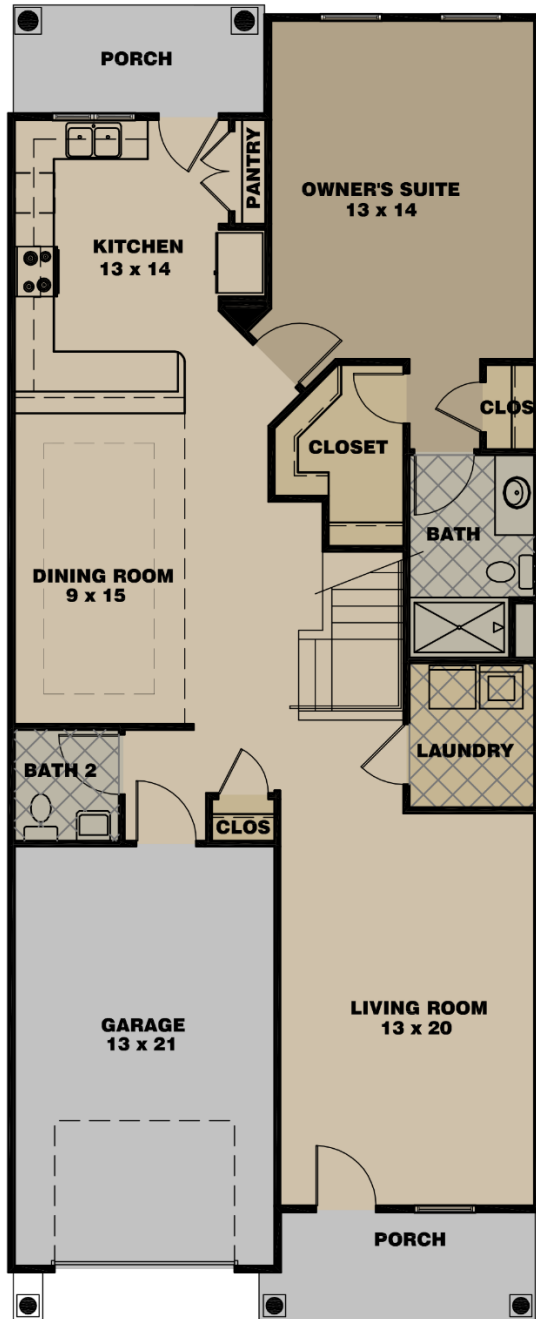
*Fiddler's
Crossing*

- OPEN FLOOR PLAN FOR ENTERTAINING
- 2304 SF
- 3 BEDROOMS, ALL WITH WALK-IN CLOSETS
- 2.5 BATHS
- GOURMET KITCHEN WITH BREAKFAST BAR & LARGE PANTRY
- LARGE DINING ROOM
- DOWNSTAIRS OWNER'S SUITE
- SPACIOUS, OPEN LOFT
- COVERED FRONT & REAR PORCH
- ATTACHED GARAGE

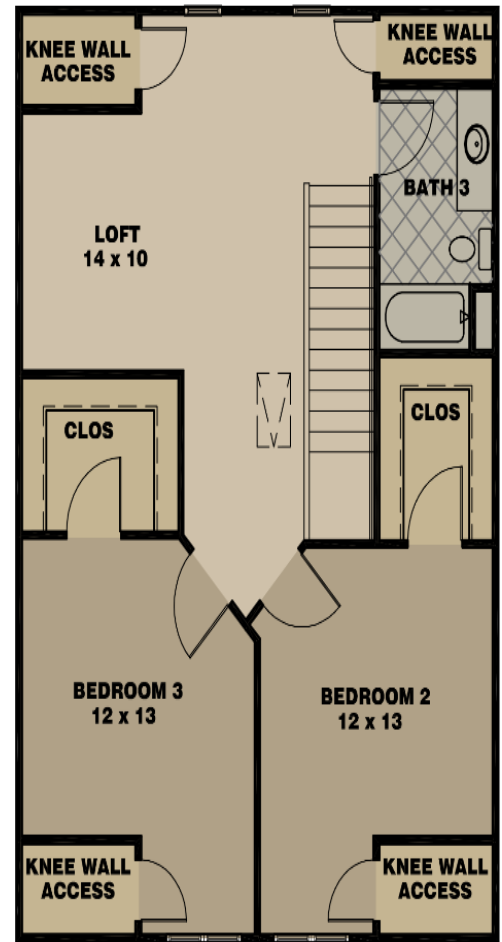


TYNDELL

THREE BEDROOM INTERIOR TOWNHOME



First Floor



Second Floor

