

# MAGNOLIA II

FOUR BEDROOM INTERIOR TOWNHOME



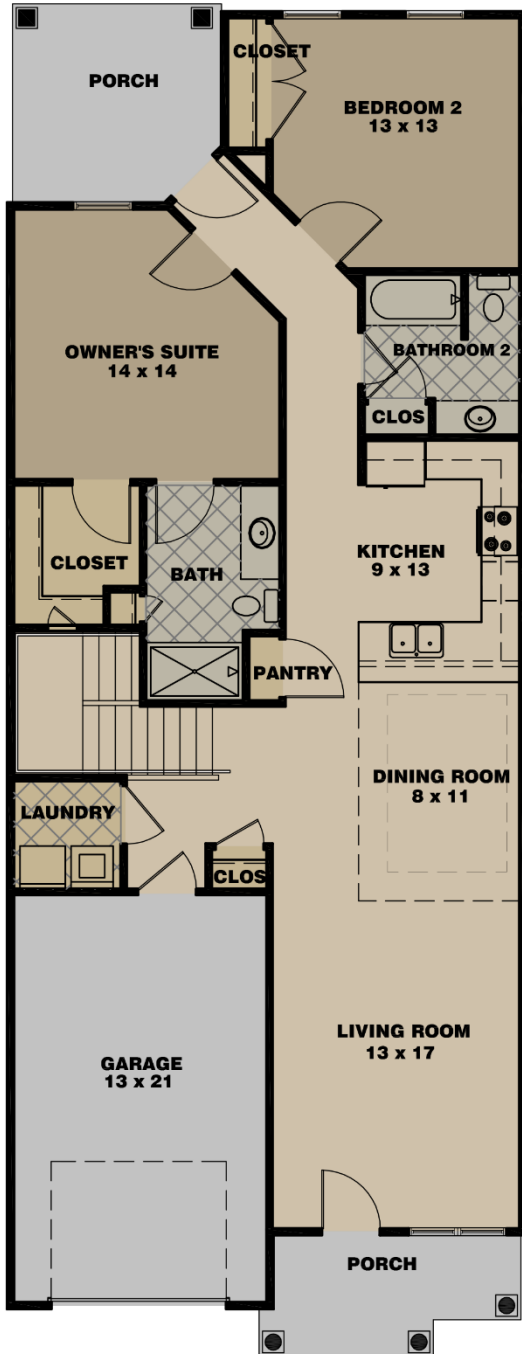
- SPACIOUS OPEN FLOOR PLAN WITH LOTS OF STORAGE
- 2147 SF
- 4 BEDROOMS / 3 BATHS
- OWNER'S SUITE & GUEST BEDROOM DOWN
- GOURMET KITCHEN WITH BREAKFAST BAR & PANTRY
- LOFT
- AN ABUNDANCE OF WALK-IN CLOSETS
- ATTACHED GARAGE

*Fiddler's  
Crossing*

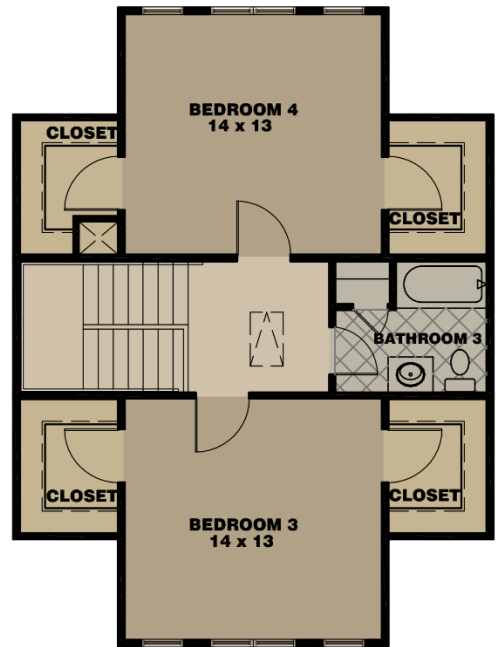


# MAGNOLIA II

## FOUR BEDROOM INTERIOR TOWNHOME



First Floor



Second Floor

