

MAGNOLIA II

THREE BEDROOM INTERIOR TOWNHOME



- SPACIOUS OPEN FLOOR PLAN WITH LOTS OF STORAGE
- 2,004SF
- 3 BEDROOMS
- 3 BATHS
- OWNER'S SUITE & GUEST BEDROOM DOWN
- LOFT & OFFICE
- LOTS OF WALK-IN CLOSETS
- WALK-IN MECHANICAL ROOM/ STORAGE
- ATTACHED GARAGE

*Fiddler's
Crossing*

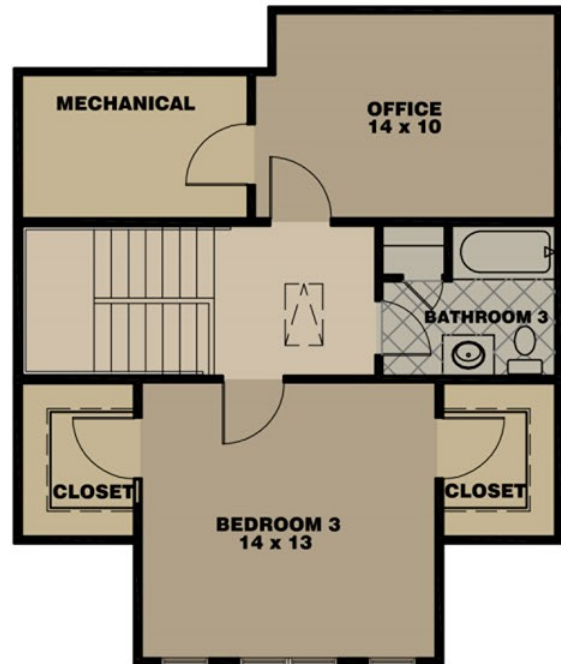


MAGNOLIA II

THREE BEDROOM INTERIOR TOWNHOME



First Floor



Second Floor

Magnolia Two - Three Bedroom

2,004 sq. ft.

